



Austin Independent School District 2009-2010 Mathews Elementary School Campus Report Card

<http://www.austinschools.org/mathews>



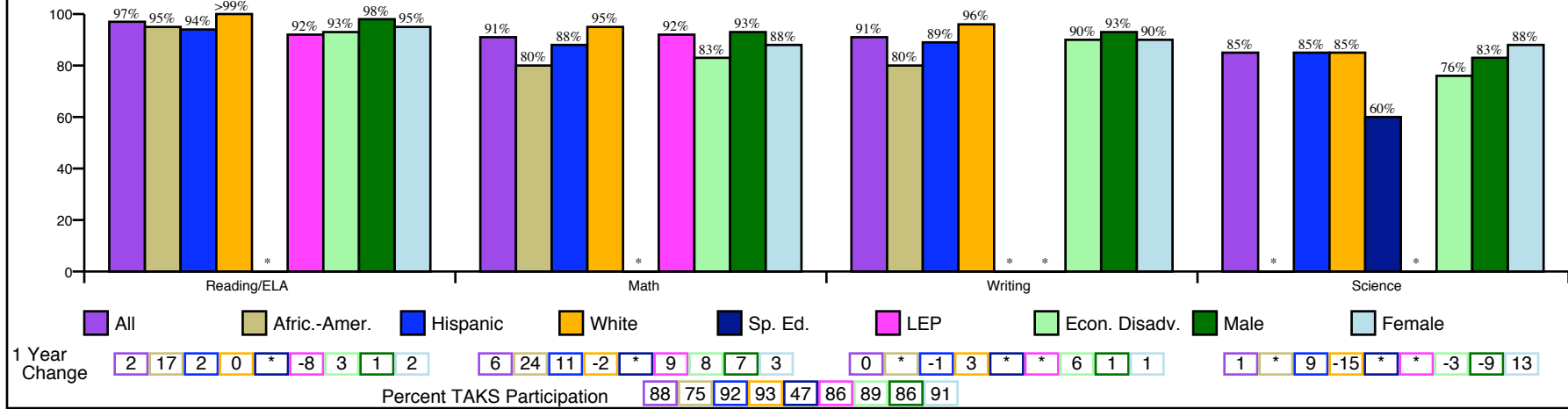
906 West Lynn
Austin, TX 78703
Phone: (512) 414-4406
Fax: (512) 476-2108
Principal: Amy Kinkade

State Accountability Ratings
2007: Acceptable 2008: Recognized 2009: Exemplary
Adequate Yearly Progress per NCLB
Met Met Met

Gold Performance Acknowledgements
★ ★ ★ ★

http://www.austinisd.org/inside/docs/State_Fed_expl.doc

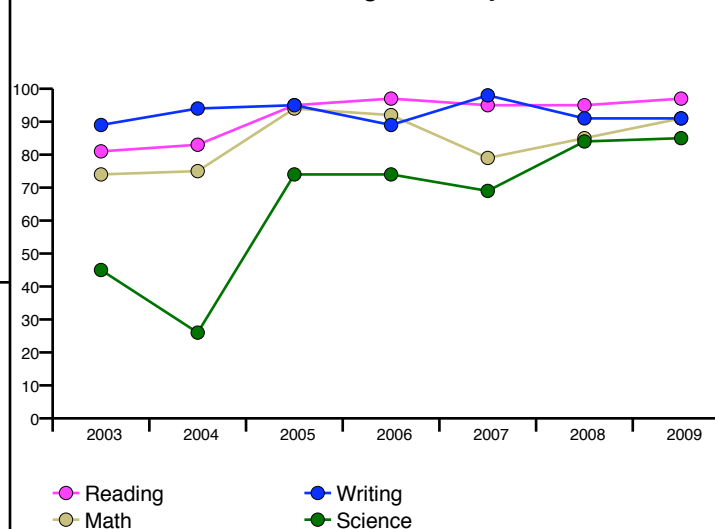
Percent of Students Passing TAKS, Spring 2009



Percent of Students Passing TAKS, 2003-2009

	Reading/ELA	Math	Writing	Science
2003	81%	74%	89%	45%
2004	83%	75%	94%	26%
2005	95%	94%	95%	74%
2006	97%	92%	89%	74%
2007	95%	79%	98%	69%
2008	95%	85%	91%	84%
2009	97%	91%	91%	85%
1yr Change	2	6	0	1
5yr Change	14	16	-3	59
State Goal	70%	60%	70%	55%
Federal Goal	73%	67%		

TAKS Passing Rates by Year



Indicators Associated with Higher Education Readiness

Not Applicable

Percent of Students Commended on TAKS, Spring 2009

	Reading/ELA	Math	Writing	Science
All	58%	46%	43%	48%
Afric.-Amer.	35%	20%	10%	*
Hispanic	49%	41%	50%	30%
White	67%	48%	40%	77%
Sp. Ed.	*	*	*	<1%
LEP	54%	50%	*	*
Econ. Disadv.	51%	41%	38%	29%
Male	56%	45%	33%	48%
Female	60%	46%	52%	47%

District Report Card:
http://www.austinisd.org/inside/docs/crc_district_2009_2010.pdf

* No data reported for fewer than 5 students

Glossary:
http://www.austinisd.org/inside/docs/crc_glossary.doc

NCLB Report Card:
http://www.tea.state.tx.us/index4.aspx?id=4638&menu_id=798



Austin Independent School District 2009-2010 Mathews Elementary School Campus Report Card

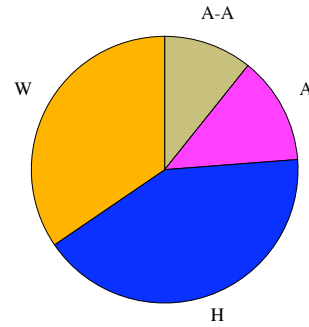
<http://www.austinschools.org/mathews>



906 West Lynn
Austin, TX 78703
Phone: (512) 414-4406
Fax: (512) 476-2108
Principal: Amy Kinkade

Student Profile, 2009-10

Enrollment	391
Gender	
Female	45.5%
Male	54.5%
Transfers	
Inbound	
NCLB	0
Choice	117
Outbound	
NCLB	0
Choice	46



Race/Ethnicity

■ Afric.-Amer. (A-A)	10.7%
■ Asian (A)	13.0%
■ Hispanic (H)	41.7%
■ Nat.-Amer. (N-A)	0.0%
■ White (W)	34.5%

Students by Category, 2009-10

English as Second Language	9.2%
Gifted/Talented	5.4%
Advanced Courses	n/a
Special Ed.	5.4%
Career Tech	n/a
Economic Disadvantage	52.4%
Limited English Proficiency	19.7%
At-Risk	29.2%
Bilingual	9.2%
First Year US Enrollment	4.1%
Migrant	0.0%

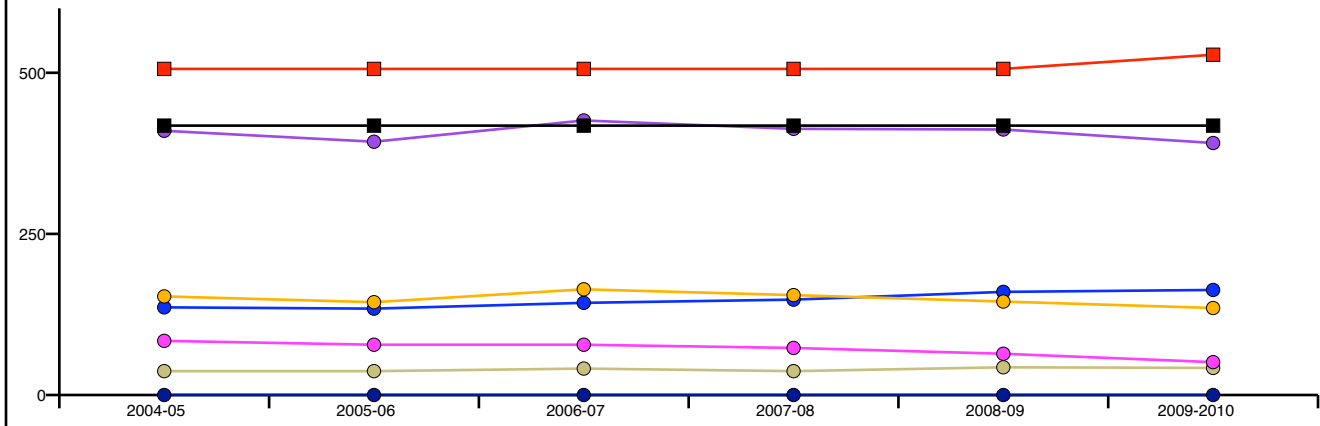
TELPAS

Level	2008	2009	Change
Beginning	2%	5%	3
Intermediate	19%	3%	-16
Advanced	17%	24%	7
Advanced High	62%	68%	6

Student Behaviors, 2008-09

Attendance Rate	95.6%
Disciplinary Placement	n/a
Retention Rates	
Kindergarten	7.1%
1st Grade	0.0%
2nd Grade	0.0%
3rd Grade	0.0%
4th Grade	2.5%
5th Grade	0.0%
6th Grade	0.0%

Enrollment by Ethnicity by Year and Building Capacity



Teacher & Staff Profile, 2009-10

Gender	
Female	92.9%
Male	7.1%

Race/Ethnicity	
African-American	2.4%
Asian	0.0%
Hispanic	14.3%
Native American	0.0%
White	83.3%

Average Years of Teaching Experience	13
Highly Qualified, 08-09	100.0%
% Classes Taught by Highly Qualified, 08-09	100.0%

	2004-05	2005-06	2006-07	2007-08	2008-09	2009-2010
■ Perm. Cap.	418	418	418	418	418	418
■ Func. Cap.	506	506	506	506	506	528
● All	410	393	426	413	412	391
● Afric.-Amer.	37	37	41	37	43	42
● Hispanic	136	134	143	148	160	163
● White	153	144	164	155	145	135
● Nat.-Amer.	0	0	0	0	0	0
● Asian	84	78	78	73	64	51